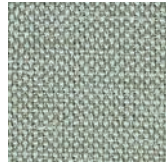


SPECIFICATIONS

Techno Linen



TL-01



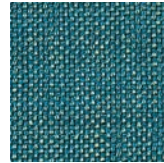
TL-29



TL-67



TL-82



TL-93

End Usage

Woven Upholstery

Industry Usage

Contract / Office

Hospitality

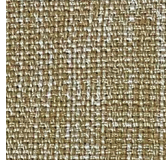
Healthcare

Composition	100% polyester, acrylic backed
Finish Standard	Soil & stain
Finish Options	Nano Tex* or Alta*
Width	55"
Country of Origin	China
Cleaning	Code: WS or SW
Color Fastness	Lightfastness Class 4.0 Lightfastness Hours - AATCC 16 Option 1 or 3 Grade 4 minimum at 60
Abrasion	Wyzenbeek cotton duck - 200,000 double rubs ASTM D4157
Fire Rating	Cal 117-2013 NFPA 260 UFAC Class 1

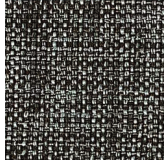
* Additional cost

SPECIFICATION

Techno Linen



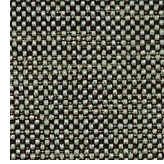
TL-183



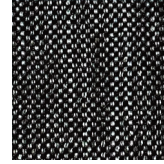
TL-155



TL-137



TL-118



TL-100

End Usage

Draperies

Industry Usage

Contract / Office

Hospitality

Healthcare

Composition	100% polyester
Finish	FR-NFPA 701
Width	55"
Country of Origin	China
Cleaning	Code: WS
Color Fastness	Lightfastness Class 4.0 Lightfastness Hours - AATCC 16 Option 1 or 3 Grade 4 minimum at 60
Fire Rating	NFPA 701